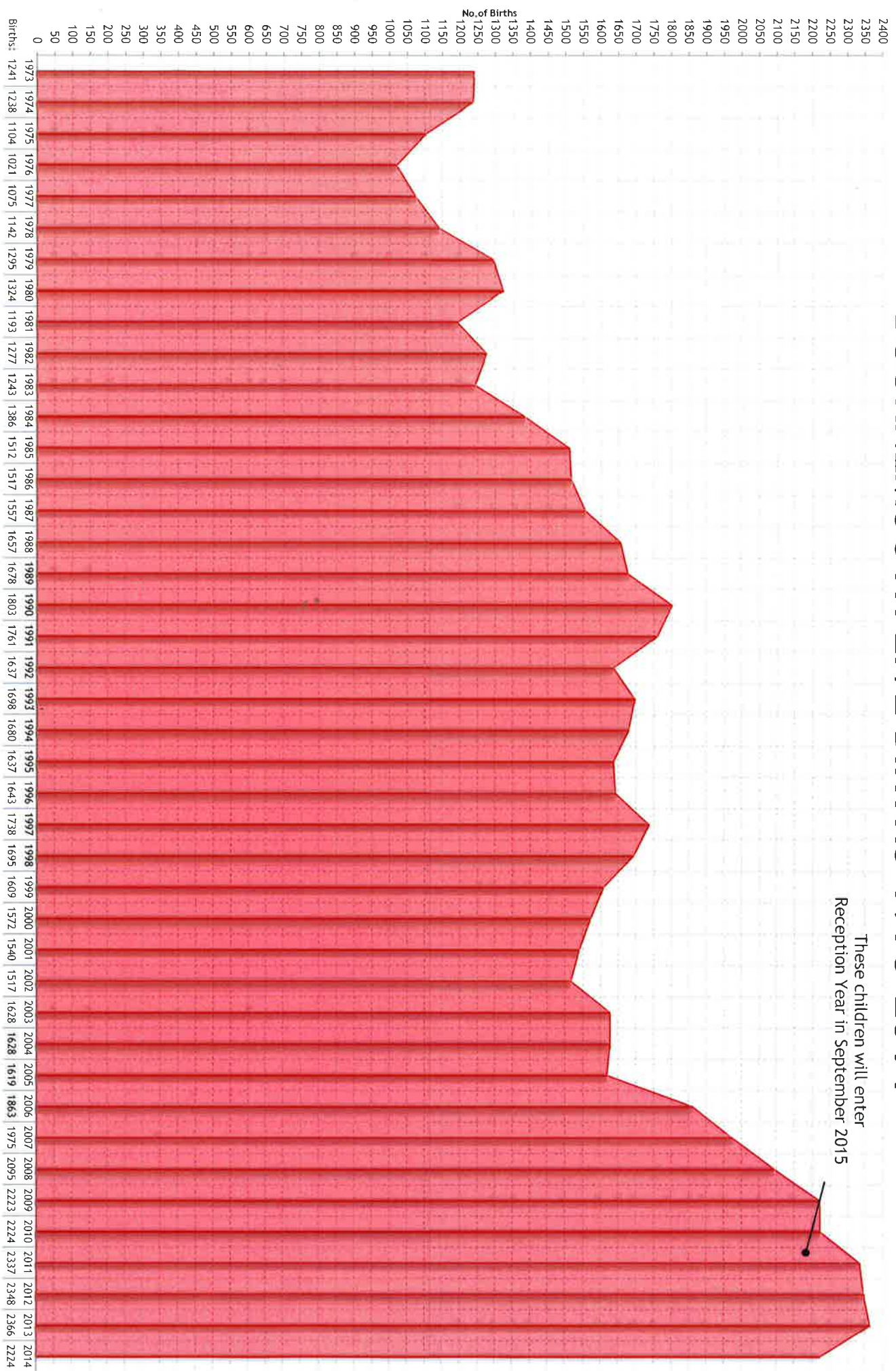


BOURNEMOUTH 2015 SCHOOL FORECASTS

BOURNEMOUTH LIVE BIRTHS 1973-2014

These children will enter Reception Year in September 2015



SECONDARY SCHOOLS

- 2015 FORECAST SUMMARY -

The Forecasts:

The forecasts are based on a 5 year weighted average transfer rate, which is calculated based on each individual year groups' trend.

The transfer rate of Year 6 primary school children living in Bournemouth, transferring into a Bournemouth secondary school, has remained at 88%.

The Year 7 forecasts are only set to reach the admission number capacity in September 2019, these being the children that started primary reception in September 2012.

Below is a breakdown of the current admission numbers that have been used in the forecasts.

	Sep 2015	Sep 2016	Sep 2017	Sep 2018	Sep 2019	Sept 2020	Sept 2021
Year 7 Forecast:	1531	1740	1761	1886	2085	2130	2047
Current Admission Number:	1936	1936	1936	1936	1936	1936	1936
Surplus Places:	405	196	175	50	-149	36	36
(surplus%)	20.9%	10.1%	9.0%	2.6%	-7.7%	-10.0%	-5.8%

Current Admission Numbers	- YEAR 7 ADMISSION NUMBERS -							
	Sep 2015	Sep 2016	Sep 2017	Sep 2018	Sep 2019	Sep 2020	Sep 2021	Sep 2022
Avonbourne College	210	210	210	210	210	210	210	210
Bournemouth School	150	150	150	150	150	150	150	150
Bournemouth School for Girls	166	166	166	166	166	166	166	166
Glenmoor School	180	180	180	180	180	180	180	180
Harewood College	180	180	180	180	180	180	180	180
Oak Academy	240	240	240	240	240	240	240	240
St.Peters School	240	240	240	240	240	240	240	240
The Bishop of Winchester Academy	210	210	210	210	210	210	210	210
The Bourne Academy	180	180	180	180	180	180	180	180
Winton Arts & Media College	180	180	180	180	180	180	180	180
Secondary Total	1936	1936	1936	1936	1936	1936	1936	1936

BOURNEMOUTH SECONDARY SCHOOLS 2015 FORECAST

Based on January 2015 School Census data

Sep 2014 Admission No: **1936**
 Total AN Capacity: **11549**
 Total NET Capacity: **11766**
 Occupancy Rate: **78.6%**
 Unfilled Places Rate: **21.4%**
 Forecast Error Rate: **-3.9%**
 Schools >25% surplus: **6 (60%)**

PRIMARY SCHOOL DATA: BOURNEMOUTH BOROUGH (ACTUALS & FORECAST)

September:	ACTUALS							FORECASTS...									
	2008	2009	2010	2011	2012	2013	2014	2015	2016	2017	2018	2019	2020	2021	2022	2023	2024
Reception	1422	1505	1561	1692	1819	1919	1855	2021	2008	1989	1950						
Year 1	1478	1432	1514	1571	1678	1881	1924	1853	2017	2005	1986	1946					
Year 2	1347	1492	1452	1542	1569	1682	1875	1912	1842	2003	1993	1973	1934				
Year 3	1362	1339	1484	1448	1534	1588	1700	1879	1917	1845	2010	1997	1977	1938			
Year 4	1418	1372	1353	1474	1428	1537	1587	1698	1876	1916	1842	2007	1994	1974	1934		
Year 5	1486	1422	1380	1350	1479	1448	1569	1588	1700	1880	1919	1845	2015	1998	1979	1938	
Year 6	1538	1464	1417	1376	1349	1499	1417	1572	1591	1704	1884	1924	1850	2022	2003	1983	1943

NUMBER ON ROLL: BOURNEMOUTH SECONDARY SCHOOLS (ACTUALS & FORECAST)

September:	ACTUALS							FORECASTS...										
	2008	2009	2010	2011	2012	2013	2014	2015	2016	2017	2018	2019	2020	2021	2022	2023	2024	2025
Admission No:	1858	1858	1858	1858	1878	1902	1992	1936	1936	1936	1936	1936	1936	1936	1936	1936	1936	1936
Year 7	1694	1724	1629	1573	1531	1474	1641	1531	1740	1761	1886	2085	2130	2047	2238	2217	2195	2083
Year 8	1669	1701	1693	1631	1573	1528	1497	1593	1483	1686	1706	1827	2021	2063	1984	2169	2149	2057
Year 9	1657	1678	1700	1681	1618	1558	1561	1495	1591	1483	1684	1704	1824	2018	2061	1982	2166	2075
Year 10	1765	1675	1689	1686	1711	1633	1608	1586	1521	1617	1511	1712	1732	1855	2052	2095	2014	2131
Year 11	1775	1768	1675	1664	1672	1721	1629	1627	1588	1524	1613	1518	1713	1737	1863	2055	2093	1958
Year 12	624	663	697	660	678	773	895	837	856	838	814	800	767	858	874	939	1030	1046
Year 13	510	541	545	577	579	640	687	859	803	826	789	772	758	735	815	832	896	980
Year 14	28	31	45	68	81	81	98	123	152	119	129	116	110	110	108	121	127	139
7-11 Total	8560	8546	8386	8235	8105	7914	7936	7832	7923	8072	8399	8845	9420	9721	10197	10517	10617	10305
12-14 Total	1162	1235	1287	1305	1338	1461	1680	1819	1811	1783	1732	1689	1635	1704	1796	1892	2053	2165
School Total	9722	9781	9673	9540	9443	9375	9616	9652	9734	9855	10131	10534	11055	11424	11994	12409	12670	12470
Year 7 Surplus:	8.8%	7.2%	12.3%	15.3%	18.5%	22.5%	17.6%	20.9%	10.1%	9.0%	2.6%	-7.7%	-10.0%	-5.8%	-15.6%	-14.5%	-13.4%	-7.6%

PUPIL CATCHMENT STATISTICS

2013/14 Bournemouth School Pupil location by Secondary Catchment:

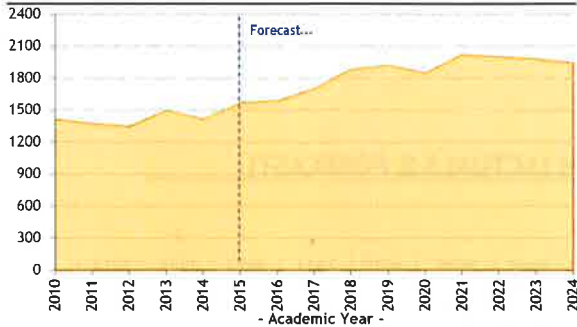
	Poole	- SECONDARY CATCHMENT OF PUPIL RESIDENCE -										Dorset	Other	TOTAL NOR	
		BH1	BH2	BH3	BH4	BH5	BH6	BH7	BH8	BH9	BH10				BH11
Year 7	77	127	18	41	21	58	132	135	253	272	211	167	111	18	1641
Year 8	70	108	19	29	26	41	115	88	211	256	177	187	129	21	1497
Year 9	102	89	27	31	24	58	131	114	244	241	184	171	123	17	1561
Year 10	103	114	21	36	21	54	137	86	225	290	172	180	150	19	1608
Year 11	97	97	19	40	20	51	156	105	251	282	177	189	142	9	1629
Catchment Totals	443	535	104	177	112	262	671	528	1204	1341	921	894	660	84	7936
% by Catchment	6%	7%	1%	2%	1%	3%	8%	7%	15%	17%	12%	11%		1%	

NOTES:

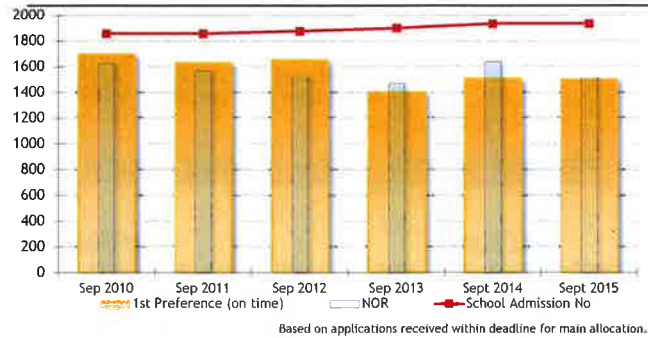
- All forecasts are based on a 5 year weighted average transfer rate.
- Admission Number Capacity: total admission numbers of all the year groups in the school.
- Total Occupancy Rate: total number on roll for 2014/15 Academic year divided by the physical capacity of school (Net Capacity).
- Forecast Error Rate: compares last years forecast for Sept 2014 against the actual number on roll (negative % indicates under forecast).
- Surplus Places by Year Group: difference between the number on roll of the year group and the relevant admission number.

BOURNEMOUTH SECONDARY SCHOOLS STATISTICS & ANALYSIS

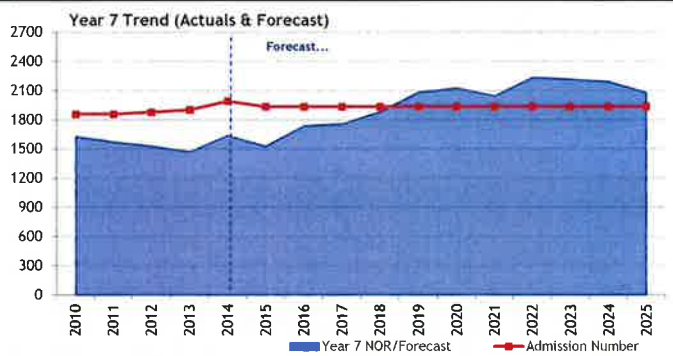
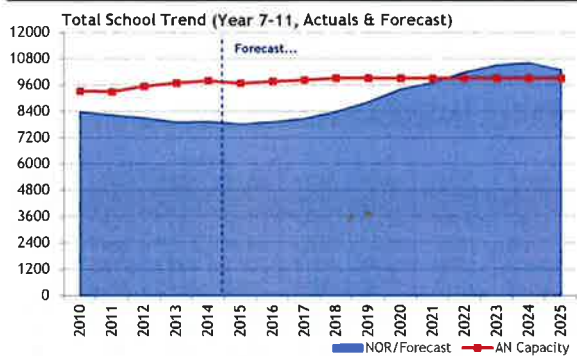
BOURNEMOUTH PRIMARY YEAR 6 PUPILS



APPLICATIONS RECEIVED



SCHOOL TRENDS (ACTUALS & FORECASTS)



PUPIL LOCATION STATISTICS

2013/14 Bournemouth Secondary School Pupil (Year 7-11) location by Primary Catchment:

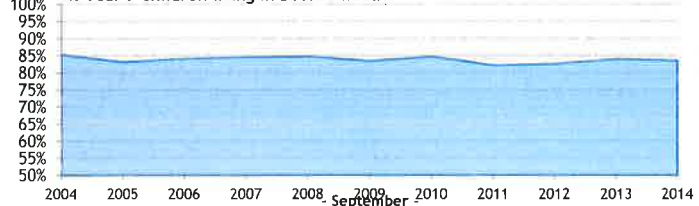
PRIMARY CATCHMENT OF PUPIL RESIDENCE

	POOLE	- West Zone -						- Central -			- South East Zone -				DORSET	Other	TOTAL NOR
		Elmrise	Heath	Kinson	Kingsl	HillView	Winton	Muscliff	Queens	St.Mich	Malmes	KingsP	Pokes	Stourf			
Oak Academy	170	128	163	78	43	14	14	7	5	8	4	5	0	0	3	1	643
LeAF Studio	16	10	7	7	2	4	7	4	5	2	2	2	3	15	0	88	
Bourne Academy	82	35	103	91	155	75	60	6	17	7	10	20	2	4	6	673	
Winton Boys	38	6	24	22	66	84	206	37	52	25	29	31	2	3	5	629	
Glenmoor Girls	53	18	40	34	78	96	155	22	32	10	24	23	1	2	9	597	
Bournemouth Boys	60	5	7	10	20	21	90	43	94	23	43	47	30	75	151	751	
Bournemouth Girls	65	6	7	6	14	32	74	32	83	28	44	42	21	110	208	813	
BOW Academy	10	2	5	1	8	29	110	207	277	12	59	44	7	24	11	807	
Avonbourne College	13	2	6	1	7	7	76	60	103	38	73	312	53	184	15	951	
Harewood College	6	0	3	1	2	3	33	21	63	33	62	243	40	113	4	629	
St.Peters School	20	15	18	16	20	27	59	40	120	54	48	181	86	264	277	1196	
Catchment Totals	530	227	383	267	415	392	884	479	851	240	398	950	246	782	649	84	7777
% by Catchment	7%	3%	5%	3%	5%	5%	11%	6%	11%	3%	5%	12%	3%	10%	8%	1%	

Total School Pupil Location (Years 7-11 only)



% Year 7 Children living in Bournemouth



BOROUGH SUMMARY 2015 FORECAST

Based on January 2015 School Census data

ALL BOURNEMOUTH SCHOOLS PUPIL NUMBERS (ACTUALS & FORECAST)

		ACTUALS						FORECAST FIGURES IN BLUE...											
September:		2008	2009	2010	2011	2012	2013	2014	2015	2016	2017	2018	2019	2020	2021	2022	2023	2024	2025
- Pre-School -	0	2142	2236	2311	2330	2275	2218												
	1	2122	2182	2214	2332	2312	2266	2240											
	2	1978	2164	2165	2289	2271	2281	2271	2244										
	3	1754	1990	2143	2268	2160	2257	2283	2253	2230									
	4	1707	1769	1953	2215	2179	2141	2200	2273	2241	2218								
- Primary -	Year R	1424	1512	1568	1701	1829	1926	1865	2031	2018	1999	1960							
	Year 1	1489	1435	1524	1581	1688	1893	1933	1863	2029	2017	1997	1958						
	Year 2	1360	1502	1457	1554	1580	1695	1896	1927	1856	2019	2009	1989	1949					
	Year 3	1374	1356	1497	1456	1550	1603	1720	1894	1932	1861	2026	2013	1993	1953				
	Year 4	1429	1386	1375	1488	1436	1554	1609	1715	1895	1935	1861	2027	2014	1994	1954			
	Year 5	1502	1439	1397	1370	1497	1464	1593	1611	1724	1907	1946	1871	2044	2026	2007	1966		
	Year 6	1559	1486	1433	1401	1370	1517	1441	1598	1617	1732	1915	1956	1880	2055	2036	2015	1975	
- Secondary -	Year 7	1713	1753	1655	1596	1561	1507	1673	1558	1771	1792	1919	2122	2168	2084	2277	2256	2234	2094
	Year 8	1696	1724	1725	1657	1598	1555	1531	1619	1507	1713	1734	1856	2054	2097	2016	2204	2184	2067
	Year 9	1692	1705	1730	1714	1646	1587	1606	1525	1623	1513	1717	1738	1861	2059	2102	2021	2209	2092
	Year 10	1791	1709	1718	1718	1742	1668	1669	1623	1556	1655	1546	1752	1773	1898	2100	2144	2062	2158
	Year 11	1802	1795	1711	1695	1708	1758	1686	1666	1627	1561	1652	1555	1755	1779	1908	2104	2144	1985
- 6th Form -	Year 12	632	671	705	668	691	773	909	849	868	850	826	811	778	871	886	952	1060	1046
	Year 13	519	548	551	586	588	640	697	871	815	838	800	784	769	746	827	844	909	980
	Year 14	36	40	50	74	88	81	112	140	172	135	147	132	125	125	122	137	143	139
TOTALS	Pre-School	9703	10341	10786	11434	11197	11163												
	Primary	10137	10116	10251	10551	10950	11652	12057	12639	13072	13469	13714							
	Secondary	8694	8686	8539	8380	8255	8075	8165	7992	8084	8235	8568	9023	9609	9917	10404	10730	10833	10396
	Sixth Form	1187	1259	1306	1328	1367	1494	1718	1860	1855	1823	1773	1727	1671	1741	1835	1933	2113	2165
	Grand Total	29721	30402	30882	31693	31769	32384												

PUPIL LOCATION (2014/15 ACADEMIC YEAR)

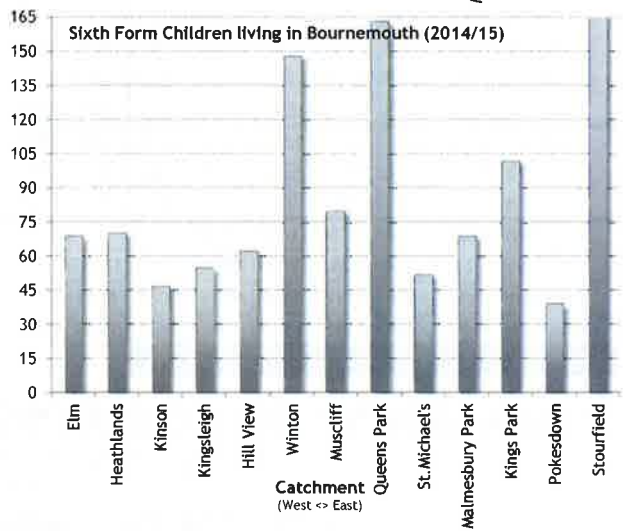
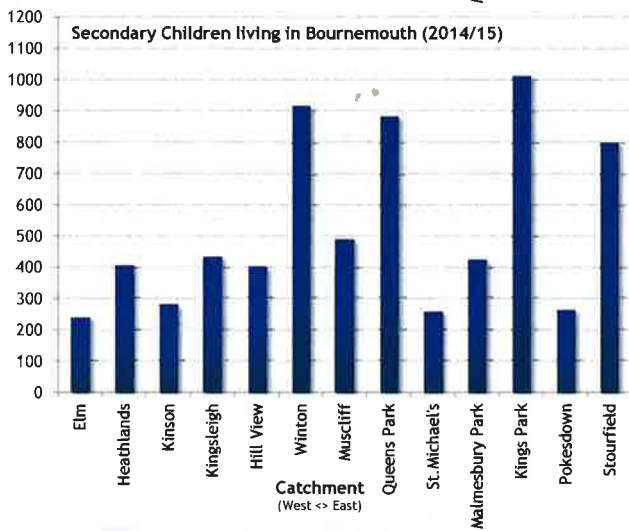
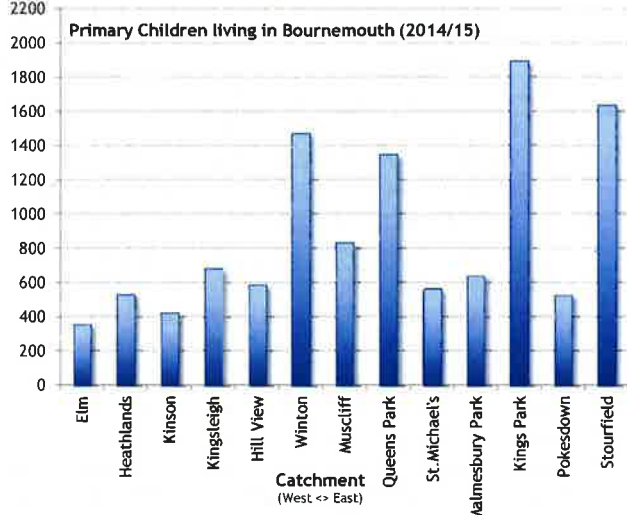
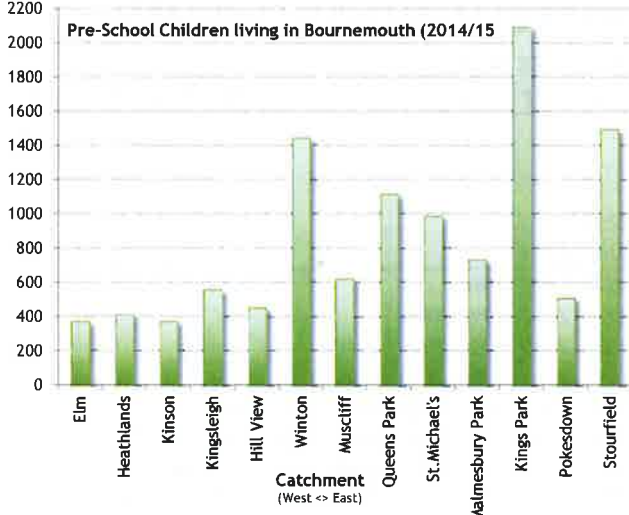
- PRIMARY CATCHMENT OF PUPIL RESIDENCE -

		- West Zone -					- Central -					- South East Zone -			Boroughs			TOTALS
		Elm	Heath	Kinson	Kingsl	HillView	Winton	Muscliff	Queens	St.Mich	Malmes	KingsP	Pokes	Stourf	DORSET	POOLE	Other	
- Pre-School -	0	72	94	70	110	75	300	121	195	211	163	443	91	273				2218
	1	81	73	76	106	95	265	114	219	222	148	471	109	287				2266
	2	66	84	70	110	91	309	120	235	182	154	425	103	332				2281
	3	81	74	75	120	90	277	144	258	207	139	368	107	317				2257
	4	75	89	84	113	97	291	121	210	166	129	384	95	287				2141
- Primary -	Year R	53	72	69	92	92	249	119	194	108	95	340	80	260	15	25	2	1865
	Year 1	52	89	59	95	98	232	145	198	102	120	333	94	262	14	39	1	1933
	Year 2	48	81	73	121	99	226	140	207	104	95	303	77	239	30	52	1	1896
	Year 3	56	72	60	90	85	212	126	198	73	98	265	70	232	26	56	0	1719
	Year 4	51	73	52	93	61	200	116	184	73	84	241	68	221	39	52	1	1609
	Year 5	53	71	54	105	88	177	105	177	56	79	218	72	233	45	61	1	1595
	Year 6	45	72	58	85	66	177	84	189	45	70	195	65	192	57	41	0	1441
- Secondary -	Year 7	42	72	67	108	86	185	102	174	48	91	253	53	161	118	93	20	1673
	Year 8	52	80	59	79	79	173	87	182	53	71	180	39	144	133	99	21	1531
	Year 9	50	82	47	83	80	168	89	168	59	85	186	68	160	133	131	17	1606
	Year 10	39	93	57	86	72	198	107	171	55	77	203	51	154	154	131	19	1669
	Year 11	58	80	53	79	85	193	105	187	41	101	192	52	181	152	114	9	1682
- 6th Form -	Year 12	36	43	24	31	35	87	48	93	29	35	44	21	80	159	96	50	911
	Year 13	24	21	13	23	26	56	31	64	21	32	55	18	81	114	97	21	697
	Year 14	9	6	10	1	1	5	1	6	2	2	3	0	6	21	16	23	112
Catchment Totals		1043	1421	1130	1730	1501	3980	2025	3511	1857	1868	5102	1333	4102	1210	1103	186	33102
% by Catchment		3%	4%	3%	5%	5%	12%	6%	11%	6%	6%	15%	4%	12%	4%	3%	1%	

BOROUGH SUMMARY 2015 FORECAST

Based on January 2015 School Census data

- CHILDREN LIVING IN BOURNEMOUTH ATTENDING BOURNEMOUTH SCHOOLS -



Total Children living in Bournemouth attending Bournemouth Schools (2014/15 Academic Year)

