

Indices of Deprivation 2015

The Indices of Deprivation 2015 provide a relative measure of deprivation in small areas across England. Deprivation refers to more than just poverty, it refers to a lack of resources and opportunities.

How are the Indices calculated?

The English Indices of Deprivation 2015 are based on 37 separate indicators, organised across seven distinct domains of deprivation which are combined, using appropriate weights, to calculate the Index of Multiple Deprivation 2015 (IMD 2015). This is an overall measure of multiple deprivation experienced by people living in an area and is calculated for every Lower layer Super Output Area (LSOA), or neighbourhood, in England. Every such neighbourhood in England is ranked according to its level of deprivation relative to that of other areas.

The domains each reflect a different aspect of deprivation and are as follows:

- Income Deprivation
- Employment Deprivation
- Health deprivation & Disability
- Education, Skills & Training
- Crime
- Barriers to Housing & Services
- Living Environment Deprivation

Each of these domains has their own scores and ranks.

The geography used for the ID is the Lower layer Super Output Area (LSOA) as it is a consistent geography that covers the whole of England. There are 32,844 LSOA's across England (in increase from 32,482 in 2010). It allows comparisons of deprivations between different areas. Within Bournemouth there are 110 LSOAs. Each LSOA varies in geographical size but contains approximately 1,500 people. Using these smaller geographical areas enable localised issues and deprivation to be identified where ward geography may have masked them.

How should the Indices of Deprivation be used?

The Index of Multiple Deprivation is a relative measure of deprivation. This means it can tell you if one area is more deprived than another but not by how much. For example, a small area with a rank of 1,000 is not half as deprived as a place with a rank of 500.

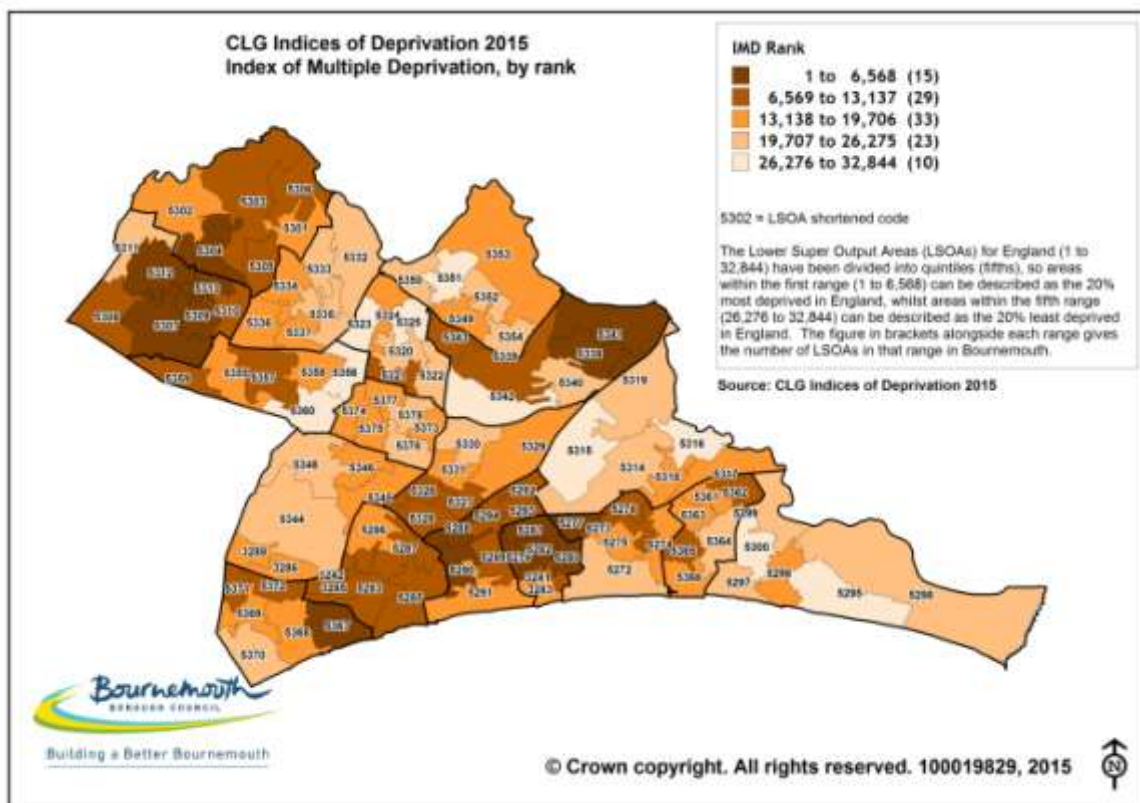
When looking at changes in deprivation between the Indices of Deprivation 2015 and previous versions, users should therefore be aware that changes can only be described in relative terms, for example, the extent to which an area has changed rank or decile of deprivation.

For example, an area can be said to have become more deprived **relative to other areas** if it was within the most deprived 20 per cent of areas nationally according to the 2010 Index of Multiple Deprivation but within the most deprived 10 per cent according to the 2015 Index. However, it would not necessarily be correct to state that the **level of deprivation in the area has increased** on some absolute scale, as it may be the case that all areas had improved, but that this area had improved more slowly than other areas and so been 'overtaken' by those areas.

Indices of Multiple Deprivation:

The IMD is the overarching indicator for the deprivation themes. This is used as a recognised indicator of an areas deprivation relative to other areas. There are 32,844 LSOAs across England with a ranking of 1 being the most deprived and 32,844 being the least deprived. The IMD combines and weights all of the domains to give an overall Indices of Multiple Deprivation. The Domains area weighted as the following:

- Income Deprivation 22.5%
- Employment Deprivation 22.5%
- Health deprivation & Disability 13.5%
- Education, Skills & Training 13.5%
- Crime 9.3%
- Barriers to Housing & Services 9.3%
- Living Environment Deprivation 9.3%



CM's commentary: *Although we have seen an improvement in terms of ranking for area 282 under the IMD it still remains within the first most deprived decile in England and the most deprived LSOA in Bournemouth. Area 281 has seen its deprivation ranking increase indicating that it is now more deprived relative to other areas in England than it was under the 2010 Indices. Area 280 has moved from the first to the second most deprived deciles.*

Due to the increase in population size in the area, two LSOA's have been created since the previous Indices of Deprivation from the LSOA previously known as 278. This is to ensure that the small areas retain approximately the same number of people. Therefore in the table below and subsequent tables there is no prior (2010) ranking for areas 3241 (Argyll Road) and 3283 (Honeycombe Chine)

and there is no longer area 278. (Please be careful to ensure you look at data for 3241 and 3283 and NOT 5241 and 5283 if accessing the data independently as these are in Bournemouth Town Centre!)

It should strongly be noted that the majority of data used to construct the Indices is from 2008-2013 and therefore before the Boscombe Commitment brought into place. As such it is my view that these Indices should be seen as the initial benchmarking of our work rather than an indication of our work over the last three years. Four out of six LSOA's in Boscombe West are within the 20% most deprived in England.

Indices of Multiple Deprivation				
LSOA	Area	2010 ranking	2015 ranking	Rank in Bmth
282	Boscombe Central	113	226	1 st
281	St Clements	1,216	978	2 nd
279	Drummond Road	2,020	3,096	5 th
280	Boscombe South	2,543	3,420	9 th
3241	Argyll Road	n/a	8,086	26 th
3283	Honeycombe Chine	n/a	15,398	56 th

Income Deprivation:

The **Income Deprivation** Domain measures the proportion of the population experiencing deprivation relating to low income. The definition of low income used includes both those people that are out-of-work, and those that are in work but who have low earnings (and who satisfy the respective means tests). This domain and sub-domains use the following data:

- Adults and children in Income Support Families; Adult and Children in income-based Jobseekers Allowance families; Adults and Children in income based Employment and Support Allowance families; Adults and Children in Pension credit (Guarantee) families; Adults and Children in Working Tax Credit and Child Tax Credit families not already counted, and those whose equivalised income (excluding housing benefit) is below 60 per cent of the median before housing costs; Asylum seekers in England in receipt of subsistence support, accommodation support or both; Department for Work and Pensions (DWP), Her Majesty's Revenue and Customs (HMRC) and the Home Office 2012.

CM's Commentary: Area 280 has seen its ranking move from the second to the third most deprived deciles. Areas 281 and 282 remain within the first most deprived decile. Three out of six LSOA's in Boscombe West are within the 20% most deprived in England.

Income Deprivation Domain				
LSOA	Area	2010 ranking	2015 ranking	Rank in Bmth
281	St Clements	2,157	1,817	1 st
282	Boscombe Central	1,089	2,065	2 nd
279	Drummond Road	4,773	6,190	12 th
280	Boscombe South	5,432	6,765	13 th
3241	Argyll Road	n/a	12,417	41 st
3283	Honeycombe Chine	n/a	14,739	51 st

Income Deprivation Affecting Children:

The **Income Deprivation Affecting Children Index** (IDACI) measures the proportion of all children aged 0 to 15 living in income deprived families. It is a subset of the Income Deprivation Domain which measures the proportion of the population in an area experiencing deprivation relating to low income. The definition of low income used includes both those people that are out-of-work, and those that are in work but who have low earnings (and who satisfy the respective means tests).

CM's Commentary: *Although we have seen improvements in area 281's ranking it still remains within the first most deprived decile in England and is the most deprived LSOA in Bournemouth for income deprivation affecting children. Area 282 has moved from the first to the second decile. Area 279 has shown significant improvement and moved from the first decile to the third decile. Area 280 has shown significant improvement moving from the second decile to the fourth decile. Two out of six LSOA's in Boscombe West are within the 20% most deprived in England.*

Income Deprivation Affecting Children index				
LSOA	Area	2010 ranking	2015 ranking	Rank in Bmth
281	St Clements	2,084	2,544	1 st
282	Boscombe Central	2,881	3,800	8 th
279	Drummond Road	3,249	7,501	17 th
3241	Argyll Road	n/a	10,135	32 nd
280	Boscombe South	5,050	11,062	36 th
3283	Honeycombe Chine	n/a	14,643	49 th

Income Deprivation Affecting Older People:

The **Income Deprivation Affecting Older People Index** (IDAOPI) measures the proportion of all those aged 60 or over who experience income deprivation. It is a subset of the Income Deprivation Domain which measures the proportion of the population in an area experiencing deprivation relating to low income. The definition of low income used includes both those people that are out-of-work, and those that are in work but who have low earnings (and who satisfy the respective means tests).

CM's Commentary: *Area 279 has moved from the second to the first decile for income deprivation affecting older people. Areas 281, 282 and 280 remain within the first most deprived decile although we have seen a shift of focus from area 282 being the most deprived in Bournemouth in 2010 to area 281 becoming the most deprived under the new Indices. Four out of six LSOA's in Boscombe West are within the 20% most deprived in England.*

Income Deprivation Affecting Older People Index				
LSOA	Area	2010 ranking	2015 ranking	Rank in Bmth
281	St Clements	1,746	526	1 st
282	Boscombe Central	496	1,088	2 nd
280	Boscombe South	2,173	2,209	5 th
279	Drummond Road	4,012	2,529	7 th
3283	Honeycombe Chine	n/a	10,758	43 rd
3241	Argyll Road	n/a	12,091	52 nd

Employment Deprivation:

The **Employment Deprivation** Domain measures the proportion of the working-age population in an area involuntarily excluded from the labour market. This includes people who would like to work but are unable to do so due to unemployment, sickness or disability, or caring responsibilities. This domain uses the following data:

- Claimants of Jobseekers Allowance (both contribution-based and income-based), women aged 18-59 and men aged 18-64; Claimants of Employment and Support Allowance (both contribution-based and income-based), women aged 18-59 and men aged 16-64; Claimants of Incapacity Benefit, women aged 18-59 and men aged 18-64; Claimants of Severe Disablement Allowance, women aged 18-59 and men aged 18-64; Claimants of Carer's Allowance, women aged 18-59 and men aged 18-64; from the DWP for four quarters between May 2012 and February 2013.

CM's commentary: *Although we have seen improvements across all four LSOA's, areas 282 and 281 remain within the first decile and continue to be the first and second most deprived areas in Bournemouth respectively. Areas 279 and 280 have moved from the first decile to the second decile. We have seen significant reductions in JSA claimant numbers and rates over the last 3 years however the introduction of universal credit has not been fully understood as data is only being released for JSA by the DWP. Four out of six LSOA's in Boscombe West are within the 20% most deprived in England.*

Employment Deprivation Domain				
LSOA	Area	2010 ranking	2015 ranking	Rank in Bmth
282	Boscombe Central	51	461	1 st
281	St Clements	555	1,455	2 nd
279	Drummond Road	1,852	4,240	8 th
280	Boscombe South	2,084	5,561	12 th
3241	Argyll Road	n/a	12,187	38 th
3283	Honeycombe Chine	n/a	21,199	82 nd

Health Deprivation & Disability

The **Health Deprivation and Disability** Domain measures the risk of premature death and the impairment of quality of life through poor physical or mental health. The domain measures morbidity, disability and premature mortality but not aspects of behaviour or environment that may be predictive of future health deprivation. This domain uses the following data:

- Years of potential life lost 2008-2012, Office of National Statistics (ONS)
- Comparative illness and disability ratio 2013, DWP
- Acute morbidity 2011/12 to 2012/13, Health and Social Care Information Centre (HSCIS)
- Mood and anxiety disorders 2008 to 2013, HSCIS; DWP; ONS

CM's commentary: *Area 282 shows improvement in ranking but is still the most deprived area in Bournemouth and within the first decile of deprivation. Area 279 is the only area to show any*

noteworthy change in ranking, moving from first to second decile. Four out of six LSOA's in Boscombe West are within the 20% most deprived in England.

Health Deprivation & Disability Domain				
LSOA	Area	2010 ranking	2015 ranking	Rank in Bmth
282	Boscombe Central	239	593	1 st
281	St Clements	1,055	1,361	2 nd
280	Boscombe South	1,855	1,645	3 rd
279	Drummond Road	1,666	4,031	8 th
3241	Argyll Road	n/a	12,114	38 th
3283	Honeycombe Chine	n/a	13,236	42 nd

Education, Skills and Training

The **Education, Skills and Training Deprivation Domain** measures the lack of attainment and skills in the local population. The indicators fall into two sub-domains: one relating to children and young people and one relating to adult skills. These two sub-domains are designed to reflect the 'flow' and 'stock' of educational disadvantage within an area respectively. That is, the **Children and Young People Sub-domain** measures the attainment of qualifications and associated measures ('flow'), while the **Adult Skills Sub-domain** measures the lack of qualifications in the resident working-age adult population ('stock'). This domain and the sub-domains use the following data:

- Key Stage 2 attainment, Key Stage 4 attainment and Secondary school absence 2010/11, 2011/12 and 2012/13
- Staying on in education post 16 years, 2010 to 2012
- Entry to higher education 2009/10 to 2012/13
- Adult skills 2011 Census
- English language proficiency 2011 Census
- Adult skill and English language proficiency indicators- combined 2011 Census

CM's commentary: *All four of the original LSOAs have seen their rankings increase in relation to their deprivation. Area 282 has seen its overall ranking move from the second decile to the first decile. Areas 279 has moved from the fourth to the third decile and area 281 has moved from the third to the first decile. Two out of six LSOA's in Boscombe West are within the 20% most deprived in England.*

Education, Skills & Training Deprivation Domain				
LSOA	Area	2010 ranking	2015 ranking	Rank in Bmth
282	Boscombe Central	3,972	1,548	3 rd
281	St Clements	7,794	2,848	8 th
279	Drummond Road	12,778	6,812	20 th
280	Boscombe South	12,577	10,226	31 st
3283	Honeycombe Chine	n/a	11,786	38 th
3241	Argyll Road	n/a	16,435	59 th

Children and Young People indicator:

The **Children and Young People Sub-domain** measures the attainment of qualifications and associated measures.

CM's commentary: *We continue to track children's attainment through their place of residence rather than school of attendance to ensure that we are looking at the attainment of 'Boscombe Children' rather than 'Boscombe Schools'. We have seen improvements in attainment levels since the data used to determine the indices were produced. Area 282 appears to have worsened between the 2010 and 2015 indices but in relative terms it remains within the first decile. Caution should also be used when looking at the actual numbers of children that this relates to within area 282- of a 2012 mid-year estimate of 2,019 only 238 were children aged 0 to 15 and therefore the actual number of children these figures relate to is very small. We have also seen improvements in overall school performance in one key primary school following Section 8 inspections from Ofsted and their subsequent conversion to Academy status. Four out of six LSOA's in Boscombe West are within the 20% most deprived in England.*

Children and Young People Indicator				
LSOA	Area	2010 ranking	2015 ranking	Rank in Bmth
282	Boscombe Central	1,095	330	1 st
281	St Clements	4,399	1,441	6 th
279	Drummond Road	8,482	2,804	15 th
3283	Honeycombe Chine	n/a	4,494	21 st
280	Boscombe South	8,276	6,771	34 th
3241	Argyll Road	n/a	13,960	61 st

Skills indicator:

The **Adult Skills Sub-domain** measures the lack of qualifications in the resident working-age adult population.

CM's commentary: *In the 2010 indices area 281 was the 30th most deprived area in Bournemouth for adult skills deprivation, it is now the 10th most deprived. Our updated SAA showed that from comparing 2001 to 2011 Census information our adult population across Boscombe West had improved in terms of qualifications and was now broadly in line with the figure for Bournemouth. This could highlight how data at ward level 'masks' inequalities at LSOA level. However it is likely that it is the other data which is used- English language proficiency for the adult population- which is having an impact on the ranking, particularly given our more ethnically diverse demographic. More work is needed here to understand what the real issue is here- lack of skills/education among adults or language proficiency need. One out of six LSOA's in Boscombe West are within the 20% most deprived in England.*

Skills Indicator				
LSOA	Area	2010 ranking	2015 ranking	Rank in Bmth
281	St Clements	14,049	6,097	10 th
282	Boscombe Central	12,864	6,719	12 th
280	Boscombe South	19,097	15,674	34 th
279	Drummond Road	19,206	15,185	36 th

3241	Argyll Road	n/a	18,253	52 nd
3283	Honeycombe Chine	n/a	29,390	107 th

Barriers to Housing & Services

The **Barriers to Housing and Services Domain** measures the physical and financial accessibility of housing and local services. The indicators fall into two sub-domains: the **Geographical Barriers Sub-domain**, which relates to the physical proximity of local services, and the **Wider Barriers Sub-domain** which includes issues relating to access to housing such as affordability. The domain and sub-domain uses the following data:

- Road distance to a post office 2014, Post Office Ltd
- Road distance to a primary school 2014, Department for Education Edubase
- Road distance to a general store or supermarket 201, Ordnance Survey
- Road distance to a GP surgery 2014, Organisation Data Service, Health and Social Care Information Centre
- Household overcrowding 2011, ONS
- Homelessness 2011/12, 2012/13 and 2013/14, Department for Communities and Local Government (DCLG)
- Housing affordability 2012, estimated primarily from the family Resource Survey, Regulated Mortgage Survey, Land Registry house prices and Valuation Office Agency market rents

CM's commentary: *Caution should be used with this domain- if you look at the two sub-domains underneath and using area 282 as an example you can see that for wider barriers 282 is the most deprived in Bournemouth (1st decile in England) but for geographical barriers it's three away from being the least deprived in Bournemouth (10th decile). This is a unique situation for Boscombe, elsewhere in the Borough we find areas which are deprived in both sub-domains. None of the six LSOA's in Boscombe West are within the 20% most deprived in England.*

I would suggest that, for Boscombe, you use the sub-domains if and as needed and ignore the overall 'Barriers to Housing and Services' domain.

Barriers to Housing and Services Domain				
LSOA	Area	2010 ranking	2015 ranking	Rank in Bmth
282	Boscombe Central	11,970	9,499	15 th
279	Drummond Road	13,406	11,878	24 th
280	Boscombe South	11,715	12,137	26 th
281	St Clements	13,645	12,179	27 th
3283	Honeycombe Chine	n/a	14,204	35 th
3241	Argyll Road	n/a	14,389	38 th

Wider Barriers sub domain:

The **Wider Barriers Sub-domain** which includes issues relating to access to housing such as affordability.

CM's commentary: area 282 remains the most deprived area in Bournemouth and has slipped from the second to the first most deprived decile. Area 280 is no longer the second most deprived area in Bournemouth but remains within the second most deprived decile. Area 279 remains within the second decile but has moved from the fifth to the second most deprived areas in Bournemouth. Four out of six LSOA's in Boscombe West are within the 20% most deprived in England.

Wider Barriers Sub-domain				
LSOA	Area	2010 ranking	2015 ranking	Rank in Bmth
282	Boscombe Central	3,547	2,989	1 st
279	Drummond Road	4,355	3,939	2 nd
281	St Clements	5,401	4,291	3 rd
280	Drummond road	3,626	4,724	6 th
3241	Argyll Road	n/a	6,781	17 th
3283	Honeycombe Chine	n/a	10,317	51 st

Geographical Barriers Sub-domain:

The **Geographical Barriers Sub-domain**, which relates to the physical proximity of local services

CM's commentary: There are no surprises here. Boscombe continues to be one of the least deprived areas in Bournemouth and England for geographical access to services. None of the six LSOA's in Boscombe West are within the 20% most deprived in England.

Geographical Barriers Sub-domain				
LSOA	Area	2010 ranking	2015 ranking	Rank in Bmth
3283	Honeycombe Chine	n/a	14,606	34 th
3241	Argyll Road	n/a	22,298	71 st
280	Boscombe South	30,811	26,392	86 th
281	St Clements	25,346	28,946	94 th
279	Drummond Road	30,348	30,509	102 nd
282	Boscombe Central	32,179	31,617	107 th

Crime Indicator:

The **Crime** Domain measures the risk of personal and material victimisation at local level. This domain uses the following data:

- Violence, burglary, theft and criminal violence 2013/14, Association of Chief Police Officers, provided by the Home Office

CM's commentary: Area 282 continues to be the third most deprived area in Bournemouth in relation to crime and disorder. The new LSOA area 3241 is the 6th most deprived area in Bournemouth. Although areas 279 and 280 have shown improvements in ranking they still remain in the first decile. Five out of six LSOA's in Boscombe West are within the 20% most deprived in England.

Crime Indicator				
LSOA	Area	2010 ranking	2015 ranking	Rank in Bmth
282	Boscombe Central	382	374	3 rd
3241	Argyll Road	n/a	847	6 th
281	St Clements	3,316	2,647	11 th
279	Drummond road	1,056	2,792	12 th
280	Boscombe South	1,046	3,119	15 th
3283	Honeycombe Chine	n/a	15,891	66 th

Living Environment:

The **Living Environment Deprivation** Domain measures the quality of the local environment. The indicators fall into two sub-domains. The 'indoors' living environment measures the quality of housing; while the 'outdoors' living environment contains measures of air quality and road traffic accidents. The domain and sub-domains use the following data sources:

- Housing in poor condition -English housing Survey 2011
- Houses without central heating- 2011 Census
- Air quality indicator- UK Air Information resource air quality 2012
- Road traffic accidents indicator- Department for Transport 2011, 2012 and 2013

CM's commentary: *This domain is similar to the 'barriers to housing and services' domain in that it brings together data on two quite separate issues. As such we can again see how the two sub-domains carry quite different decile rating for each LSOA. An example of this would be looking at the data for area 282- the overall living environment domain gives it a rank of 93 (first decile), the 'indoors living environment' gives it a rank of 26 (first decile) but the 'outdoors living environment' gives it a rank of 9948 (4th decile). I would suggest using the sub-domain data as needed to better illustrate Boscombe's underlying deprivation. Five out of six LSOA's in Boscombe West are within the 20% most deprived in England.*

Living Environment Deprivation Domain				
LSOA	Area	2010 ranking	2015 ranking	Rank in Bmth
282	Boscombe Central	571	93	1 st
279	Drummond road	499	108	2 nd
280	Boscombe South	1,594	300	5 th
281	St Clements	3,201	761	8 th
3241	Argyll Road	n/a	1,136	12 th
3283	Honeycombe Chine	n/a	7,263	33 rd

Indoors Living Environment:

The 'indoors' living environment measures the quality of housing.

CM's commentary: *The ranking for area 282 has an extreme deprivation ranking of 26. The areas ranking 1 to 25 include LSOA's in Cornwall, Isles of Scilly, Blackpool, Shropshire, North Devon and Barrow in Furness. With the exception of area 3283 all of the areas within Boscombe West are within*

the first decile of deprivation. This sub-domain is probably the most important one for us to use to seek additional resources for our work. All six LSOA's in Boscombe West are within the 20% most deprived in England.

Indoors Living Environment Sub-domain				
LSOA	Area	2010 ranking	2015 ranking	Rank in Bmth
282	Boscombe Central	318	26	1 st
279	Drummond road	358	92	2 nd
280	Boscombe South	973	364	5 th
281	St Clements	1,974	732	7 th
3241	Argyll Road	n/a	997	12 th
3283	Honeycombe Chine	n/a	5,949	27 th

Outdoors Environment:

The 'outdoors' living environment contains measures of air quality and road traffic accidents.

CM's commentary: *the standard definition for an area of deprivation is any area that falls within the 20% (or first and second decile) most deprived areas in England. Using this definition in relation to Outdoors Living Environment deprivation none of the areas within Boscombe West are classified as deprived. None of the six LSOA's in Boscombe West are within the 20% most deprived in England.*

Outdoors Living Environment Sub-domain				
LSOA	Area	2010 ranking	2015 ranking	Rank in Bmth
280	Boscombe South	12,374	8,507	42 nd
279	Drummond road	8,538	8,523	43 rd
281	St Clements	13,032	9,039	54 th
3241	Argyll Road	n/a	9,266	58 th
282	Boscombe Central	10,962	9,948	69 th
3283	Honeycombe Chine	n/a	11,461	84 th

