

Population Trends in Bournemouth

Development Services
 Town Hall Annexe
 St Stephen's Road
 Bournemouth
 BH2 6EA
 ☎01202 454684

Prepared by Research & Information
 ✉ statistics@bournemouth.gov.uk

Next Bulletin release date: Summer 2018

Key Facts

- ⇒ Bournemouth has a resident population of 193,700 of which approximately 65% are of working age¹
- ⇒ 126,700 people or 65.4% are of working age compared to 60.9% in South West and 63% in England & Wales
- ⇒ 16.4% (31,800) of Bournemouth's population are aged 0-15 compared to 19.0% in England & Wales
- ⇒ 18% (35,100) are of retirement age compared to 18.0% in England & Wales
- ⇒ There were 2,180 live births in Bournemouth in 2016 and 2,006 deaths
- ⇒ Net internal migration to Bournemouth in 2015-16 led to 500 additional residents
- ⇒ Net international migration to Bournemouth in 2015-16 increased the number of residents by 1,200
- ⇒ Trend-based population projections (2014-based) suggest Bournemouth's population will increase to 238,200 by 2039 (these are based on the unrevised figures)

Please note this report has been updated to reflect the revised Mid-Year Estimates released by ONS in March 2018.

This report aims to explain past and future population trends in Bournemouth. It provides information using various sources of demographic data and provides details of the drivers of population change locally.

Population Estimates

1.1 The Office for National Statistics (ONS) produce estimates from national level down to Local Authority area on an annual basis. The estimates are by age and gender. A cohort component model takes the population resident on 30th June the previous year by single year of age and gender and ages on each individual by a year. Those who have been born in the previous 12-month period are added on and those who have died are removed according to their age and gender. International migrants and internal migrants (movements within the UK) are added or removed (depending on whether they have moved to, or left the area) again according to age and gender. Population estimates use the most recent census, in this case the 2011 Census, as a starting point for the estimates. The latest available estimate is usually a year old e.g. the latest Mid-Year Estimate released June 2017 and revised in March 2018 is for Mid-2016.

Table 1: Mid-Year Estimates, 2016

Mid- 2016 Population Estimates			
	Persons ('000s)	Males ('000s)	Females ('000s)
Bournemouth	193.7	97.5	96.2
Poole	150.7	74.0	76.7
Dorset	422.9	206.4	216.5
South West	5,517.0	2,712.3	2,804.6
England & Wales	58,381.2	28,835.0	29,546.3

Source: 2016 Mid-Year Estimates, ONS, Crown Copyright

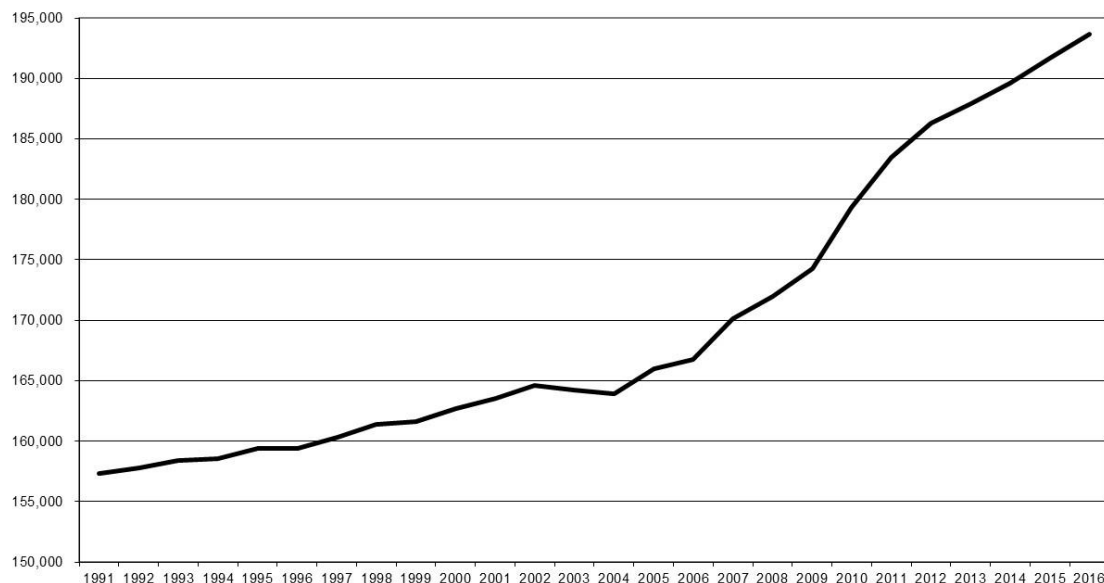
1.2 Table 1 shows the latest estimates. The Mid-2016 population estimate for Bournemouth is 193,700 and this represents an increase of 1.0% compared with the Mid-2015 estimate. Figure 1 below shows Mid-Year Estimates since

¹ Working age is defined as 16-64 years old for both males and females

1991 and shows that in 2003 and 2004 the population in Bournemouth declined but has since increased again. The decline can be explained by changes to the methodology applied by ONS relating to the redistribution of international migrants. The Mid-2002 to Mid-2010 figures have been revised to reflect the 2011 census. Figure 1 reflects all these changes and shows the increased rate of population growth since 2004.

Figure 1: Mid-Year estimates for Bournemouth 1991 - 2016

Figure 1: Mid-Year Estimates for Bournemouth, 1991-2016



Source: Mid-Year Estimates, ONS, Crown Copyright

Table 2: Mid-Year Estimates for Bournemouth by Age, 2016

	Persons	%	Males	%	Females	%
All Ages	193,700		97,500		96,200	
Under 1	2,200	1.1%	1,100	1.1%	1,200	1.3%
1-4	9,100	4.8%	4,700	4.9%	4,400	4.6%
5-9	10,400	5.4%	5,300	5.5%	5,100	5.4%
10-14	8,300	4.3%	4,300	4.5%	4,100	4.3%
15-19	11,200	5.9%	5,700	5.9%	5,500	5.8%
20-24	18,100	9.5%	9,100	9.4%	9,000	9.5%
25-29	13,300	6.9%	7,000	7.3%	6,300	6.6%
30-34	14,400	7.5%	7,400	7.7%	7,000	7.4%
35-39	14,000	7.3%	7,400	7.7%	6,500	6.8%
40-44	12,300	6.4%	6,500	6.7%	5,800	6.1%
45-49	12,600	6.6%	6,700	7.0%	5,900	6.2%
50-54	12,500	6.5%	6,400	6.6%	6,100	6.4%
55-59	10,800	5.6%	5,400	5.6%	5,400	5.7%
60-64	9,300	4.9%	4,600	4.8%	4,700	4.9%
65-69	10,100	5.3%	4,900	5.1%	5,100	5.4%
70-74	7,800	4.1%	3,800	3.9%	4,000	4.2%
75-79	6,000	3.1%	2,800	2.9%	3,200	3.4%
80-84	5,100	2.7%	2,200	2.3%	2,900	3.0%
85-89	3,700	1.9%	1,400	1.5%	2,300	2.4%
90+	2,500	1.3%	800	0.8%	1,700	1.8%

Source: Mid-Year Estimate, ONS, Crown Copyright

Table 3: Ward Population Estimates, 2016

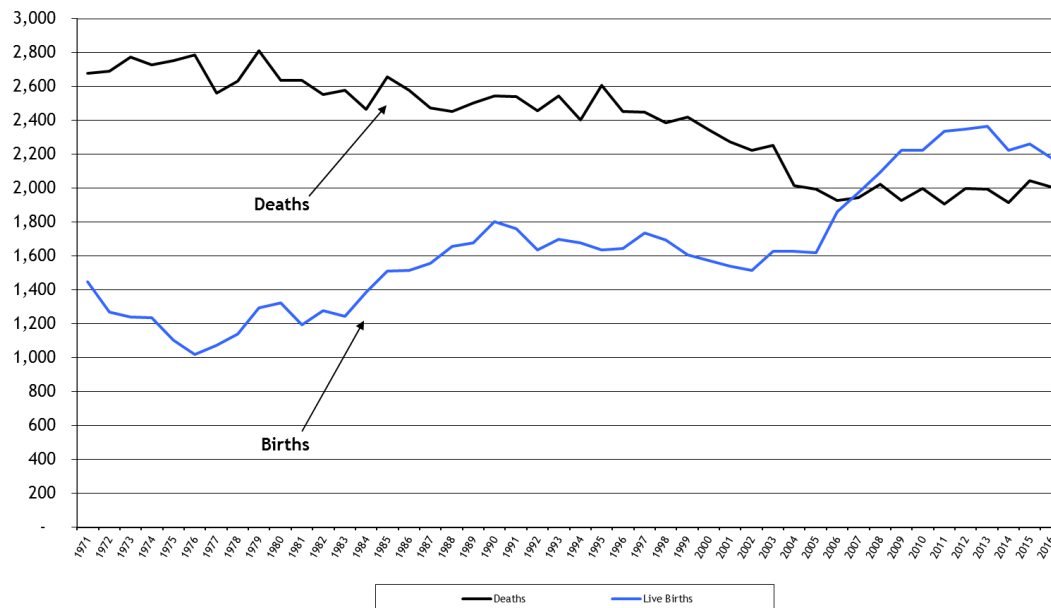
The revised figures will be included when they are released in the Autumn by ONS

Ward name	0-15	16-64	65+	All ages
Boscombe East				
Boscombe West				
Central				
East Cliff and Springbourne				
East Southbourne and Tuckton				
Kinson North				
Kinson South				
Littledown and Iford				
Moordown				
Queen's Park				
Redhill and Northbourne				
Strouden Park				
Talbot and Branksome Woods				
Throop and Muscliff				
Wallisdown and Winton West				
West Southbourne				
Westbourne and West Cliff				
Winton East				

Source: Ward Estimates using 2016 Mid-Year Estimates, ONS
 Figures may not sum due to rounding.

- 1.3 Table 3 provides an estimate of ward population produced by ONS. The population is provided for children, the working age population and the retirement age population.
- 1.4 In Bournemouth, for many years, deaths have exceeded births so, if it were not for migrants moving to the area, the population would have declined. Figure 2 illustrates the reversal of this trend in 2007 which has continued through to 2016. In 2016 births exceeded deaths by 174. The number of births fell in 2016 and appears to now be showing a falling trend. The number of deaths fell in 2016 but at 2,006 is higher than the lowest number in 2011 of 1,908.

Figure 2: Births and Deaths in Bournemouth 1971 to 2016



Source: Vital Statistics, ONS, Crown Copyright

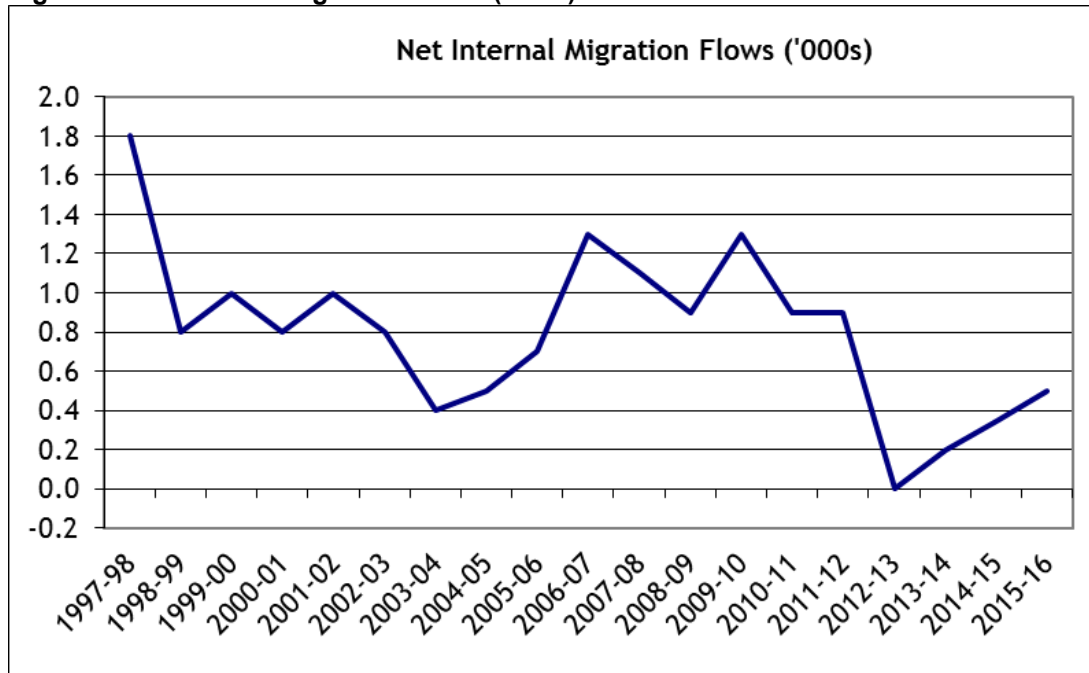
1.5 Despite the excess of births over deaths in 2016, much of the population growth in the borough over the last few years has been due to people moving to the area. Migrants comprise international migrants (moving from overseas) and internal migrants (moving from elsewhere in the UK). International migration is probably the most difficult statistic to calculate in population estimates and projections. Currently, the patterns of international migration are based on data taken from the 'International Passenger Survey', a national sample survey. Although, at national level, the sample survey may be reliable, once this data is disaggregated to local authority level the sample size is quite small. A statistical model and administrative data sources are used to increase reliability. The methodology has been revised (March 2018) with emigration estimates recalculated using an improved distribution model that includes a wider range of administration and survey data. Immigration estimates for mid-2015-16 have been recompiled using improved matching methods to distinguish students, workers and other international in-migrants. Detailed components of change figures produced by ONS reveal that net internal migration (those moving within the UK) lead to an increase in population of about 500, while international migration was estimated to increase the population by 1,200 between mid-2015 and mid-2016.

1.6 In addition, population estimates do not include people who intend to stay for less than a year. The 2011 Census reveals that there were 1,438 short-term migrants at the time of the census. A short-term migrant is defined in the census as one who stays for more than three months and less than a year. This is much lower than previous experimental estimates suggested. The 2011 census results would suggest that many of those that were previously identified by ONS as short-term migrants have been included as usually resident as they stayed or intended to stay for more than a year. The short-term migrants are likely to include language school students as Bournemouth is one of the most popular destinations nationally for English Language courses.

1.7 Internal migration is slightly easier to measure as it is based on registrations and de-registrations from GP practices. This data is obtained from the National Health Service Central Register. The main disadvantage of this dataset is that it relies on people registering with a GP practice promptly when they move. Research has shown that men in their twenties and students tend to delay registering with a GP and therefore patterns of migration in these age groups may be slightly distorted. Figure 3 shows that the net

migration has been generally falling since 2006/07 although its picked up from 2012-13 when net internal migration was zero. These figures include a revision to incorporate statistics from the Higher Education Statistics Authority (HESA) to improve the measurement of student migration. As Bournemouth is a university town this has resulted in increased net internal migration. It should be noted that these figures are consistent with the pre-2001 revised population estimates however ONS has been unable to attribute a substantial amount of Bournemouth's population increase in this period to either international or internal migration and has included it in an 'other' category. It is therefore possible that these figures are an under-estimate. It should be noted that the 'other' category amounted to a population increase of 11,600 over the ten-year period to mid-2011.

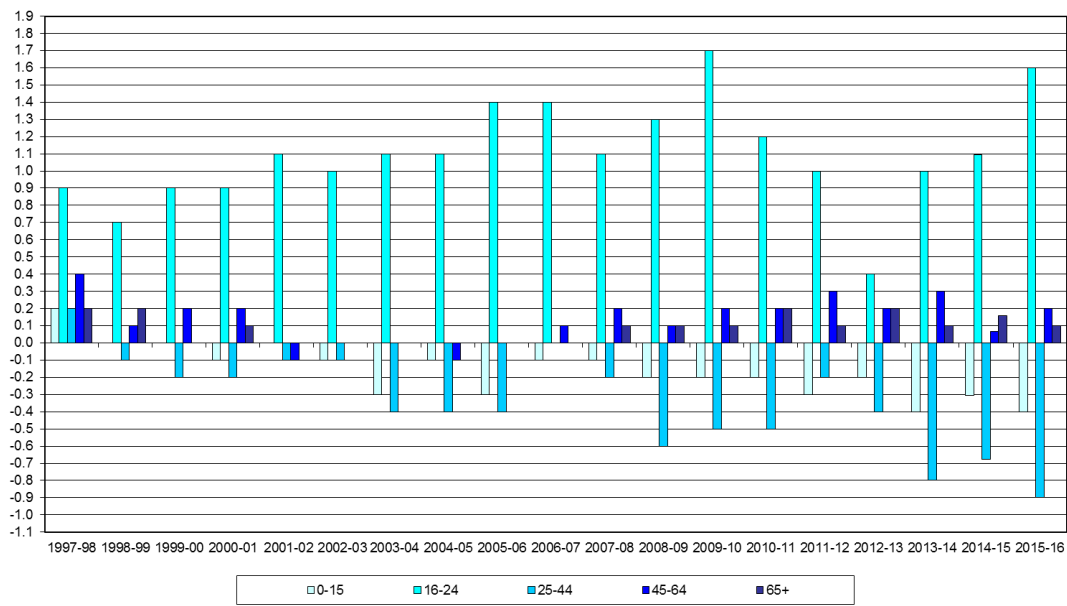
Figure 3: Net Internal Migration Flows ('000s)



Source: Internal Migration, ONS, Crown Copyright

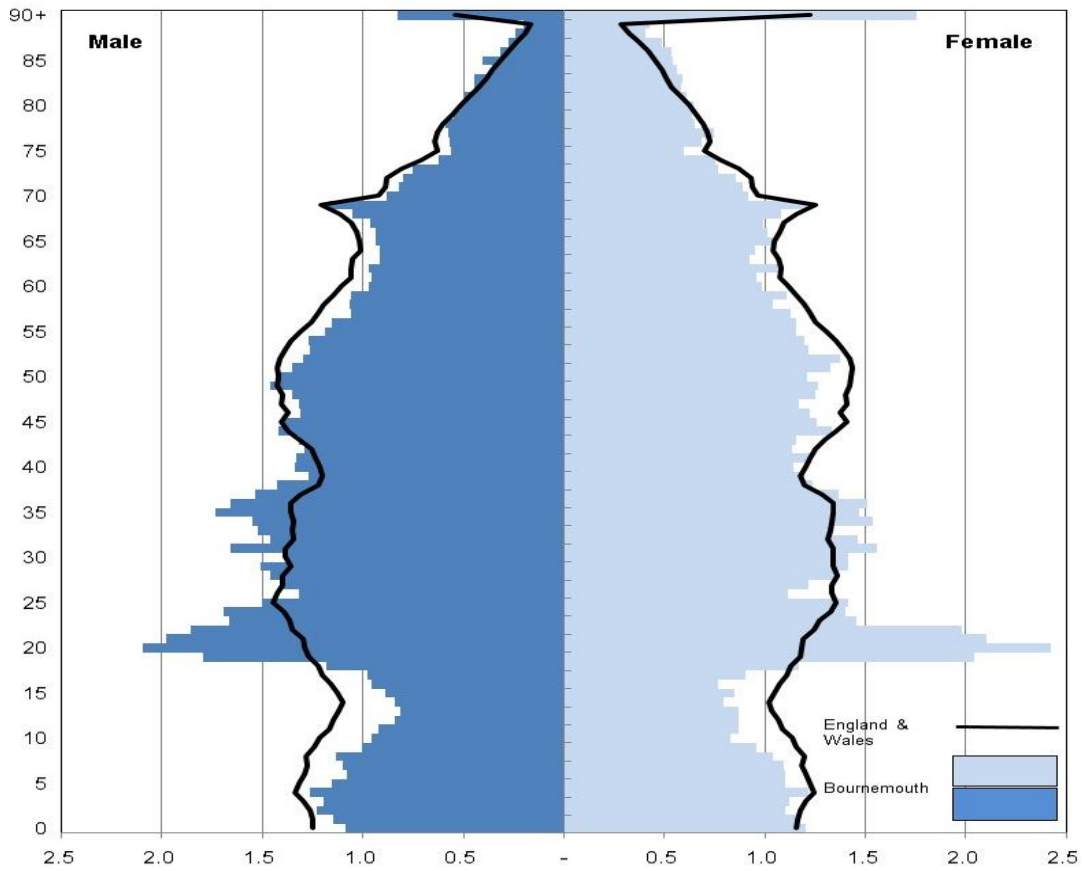
1.8 Across the broad age categories by far the largest net increase of migrants is within the 16 to 24-year olds. This is mainly due to the draw of the conurbation's two universities; in areas without universities this age group is more likely to experience a net decrease. Contrary to popular opinion in recent years the statistics show only modest numbers of older people moving to Bournemouth.

Figure 4: Net Migration by Broad Age Group 1997/98 to 2015/16



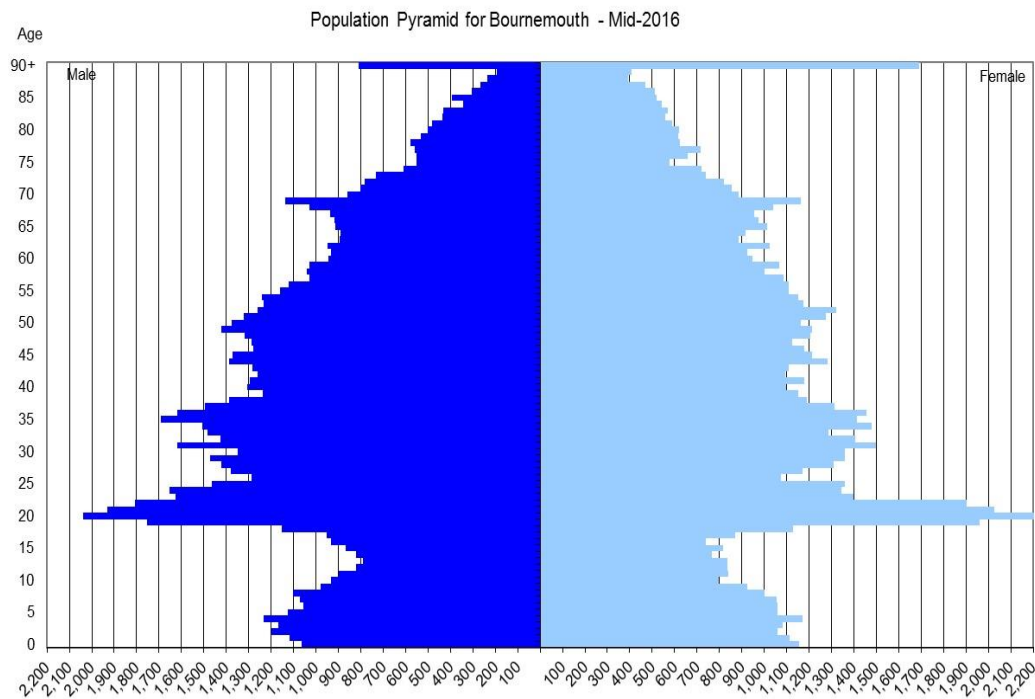
1.9 The chart below (Figure 5) compares the mid-year estimates for Bournemouth with England and Wales to illustrate the differing age profile. While Bournemouth has a smaller proportion of under-20s compared with England and Wales it has a larger proportion of student aged population and of those aged over 80. Figure 6 compares the male and female population in Bournemouth and clearly shows the larger numbers of females within the older age groups.

Figure 5: Population Pyramid for Bournemouth and England and Wales, Mid-2016



Source: Mid-Year Estimates, ONS, Crown Copyright

Figure 6: Population Pyramid for Bournemouth, Mid-2016



Produced by Research & Information, Development Services April 2018

Source: Mid-Year Estimates, ONS, Crown Copyright

1.10 When examining population trends, it is also useful to examine “dependency ratios”. A dependency ratio can be used as a simple measure of the numbers of children, elderly or both per 100 economically active aged persons. The higher the ratio the fewer resources there are likely to be to support those who cannot support themselves. It is usually defined as the ratio of those aged under-16 or over State Pension Age, to those aged 16 to State Pension Age. However, there is no reason why we should see older people as necessarily dependant as many keep economically active beyond the traditional retirement age. It could also be argued that the definition of young people could be extended as a large proportion remain in education much longer and are, therefore, generally financially dependent on their families. In Bournemouth in 2016 there were 24.5 children aged 15 or less per 100 people of working age, the ratio for the retired population is 27.2. The overall dependency ratio is 51.6. The overall figure for England and Wales is 58.7. Another useful index is the ageing index (retirement aged population per hundred children aged 0 to 15). In the past children outnumbered the elderly and would provide significant numbers to populate the working age population. However, in recent years this pattern has changed. In England and Wales, the ratio is 94.9; in Bournemouth, the ratio is higher at 110.2 retired per 100 under 16s.

Table 4: Dependency Ratio and Ageing Index

	<i>Dependency Ratio 0-15</i>	<i>Dependency Ratio RA+</i>	<i>Dependency Ratio Overall</i>	<i>Ageing Index</i>
Dorset Sub-region	27.8	41.6	69.4	149.4
Dorset CC	28.6	50.7	79.3	177.7
Bournemouth	25.1	27.7	52.8	110.4
Poole	29.6	37.0	66.6	124.8
Christchurch	29.5	58.9	88.4	199.8
East Dorset	28.6	57.9	86.5	202.7
North Dorset	29.3	42.9	72.2	146.8
Purbeck	28.2	47.3	75.5	168.1
West Dorset	28.2	54.4	82.6	192.9
Weymouth & Portland	28.0	41.7	69.7	149.1
South East	30.8	30.6	61.4	99.3
South West	28.8	35.5	64.3	123.0
England & Wales	30.1	28.6	58.7	94.9

Source: Mid-2016 Population Estimates, ONS

Population Projections

2.0 *Please note the projections below are based on the superseded Mid-Year Estimates. This report will be updated with the 2016-based sub-national projections when they are released in May 2018.* Population projections are useful for those who need to plan for the future. Population projections may be trend-based or policy-based. Trend-based projections assume past trends will continue. In the case of the ONS projections the

underlying assumptions are based on recent (usually the past five years) demographic trends. At the sub-national level, the ONS projections apply local fertility and mortality rates to calculate the projected number of births and deaths, an adjustment is made for local area migration into and out of the area. This process is repeated for each of the twenty-five years of the projection period. The projections are produced on a consistent basis across all local authorities in England. They do not consider any future policy changes or local development policies that have not yet occurred, or any future changes in the components of change at the local level such as internal migration, fertility and mortality.

- 2.1 Policy-based projections will adjust projections according to a particular policy, for example projections may be produced to reflect development policies.
- 2.2 Table 5 shows the ONS 2014-based sub-national population projections for Bournemouth for key years until 2039. As the projections are 2014-based they are constrained to the mid-year estimate figure of 191,400. These projections replace the 2012-based projections and incorporate all the latest information based on the 2011 Census and subsequent data releases.

Table 5: 2014-Based Sub-National Population Projections for Bournemouth (Trend based), ONS

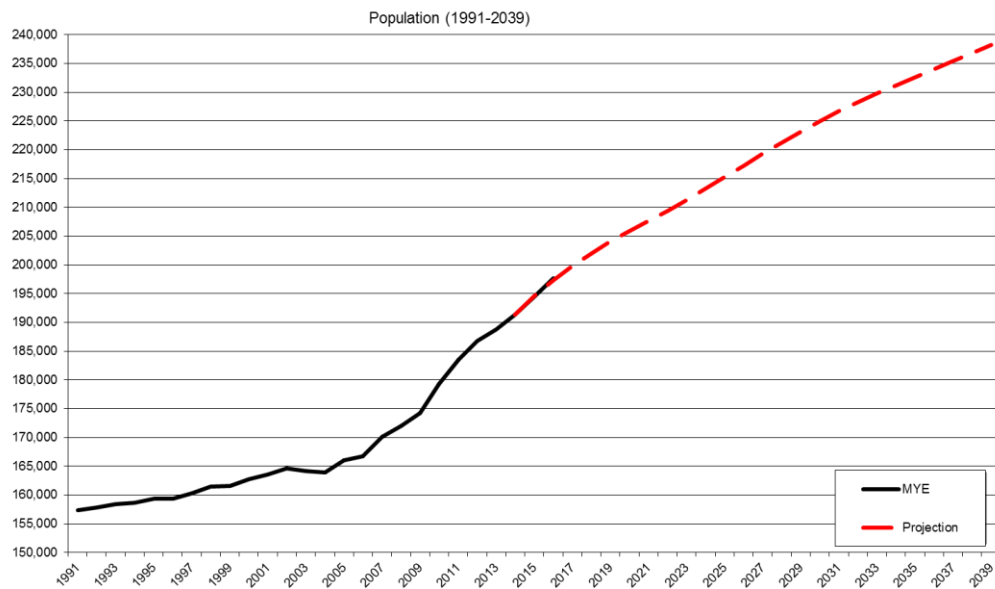
2014-based Sub-national population Projections, Bournemouth (numbers in thousands)										
AGE GROUP	2014	2015	2016	2017	2018	2019	2024	2029	2034	2039
0-4	11.2	11.3	11.3	11.2	11.2	11.3	11.4	11.3	11.3	11.5
5-9	9.5	10.0	10.4	10.9	10.9	11.0	10.9	11.1	11.0	11.0
10-14	8.1	8.1	8.3	8.7	9.2	9.6	10.9	10.8	11.0	10.9
15-19	10.8	11.4	11.4	11.2	11.0	10.9	12.5	13.9	13.8	14.0
20-24	17.9	18.3	18.7	18.9	19.2	19.3	18.3	20.7	22.0	21.9
25-29	14.4	14.2	14.5	14.6	14.6	14.7	14.4	13.7	15.1	16.0
30-34	15.5	15.6	15.3	15.2	15.3	15.3	15.5	15.1	14.3	15.7
35-39	13.0	13.5	14.2	14.7	14.9	14.9	14.7	15.0	14.6	13.8
40-44	12.6	12.6	12.5	12.2	12.3	12.6	14.2	14.2	14.5	14.0
45-49	12.6	12.6	12.7	12.8	12.7	12.7	12.4	13.9	13.9	14.3
50-54	11.9	12.4	12.7	12.9	13.0	12.9	12.7	12.3	13.8	13.8
55-59	9.9	10.3	10.7	11.1	11.5	12.0	12.9	12.7	12.2	13.6
60-64	9.5	9.4	9.4	9.6	9.9	10.0	12.1	12.9	12.6	12.1
65-69	9.8	10.0	10.1	9.7	9.4	9.4	10.0	11.9	12.7	12.5
70-74	7.1	7.4	7.9	8.8	9.2	9.4	9.0	9.6	11.5	12.3
75-79	6.1	6.1	6.0	6.0	6.2	6.5	8.7	8.4	9.0	10.7
80-84	5.3	5.2	5.1	5.1	5.1	5.2	5.6	7.6	7.4	8.0
85-89	3.6	3.6	3.8	3.7	3.8	3.8	4.0	4.5	6.2	6.0
90+	2.5	2.5	2.5	2.6	2.6	2.6	3.0	3.5	4.3	5.9
All ages	191.4	194.6	197.3	199.8	202.0	204.1	213.2	223.1	231.2	238.2

Source: Office for National Statistics, Crown Copyright, 2016

Source: 2014-based sub-national population projections, ONS, Crown Copyright

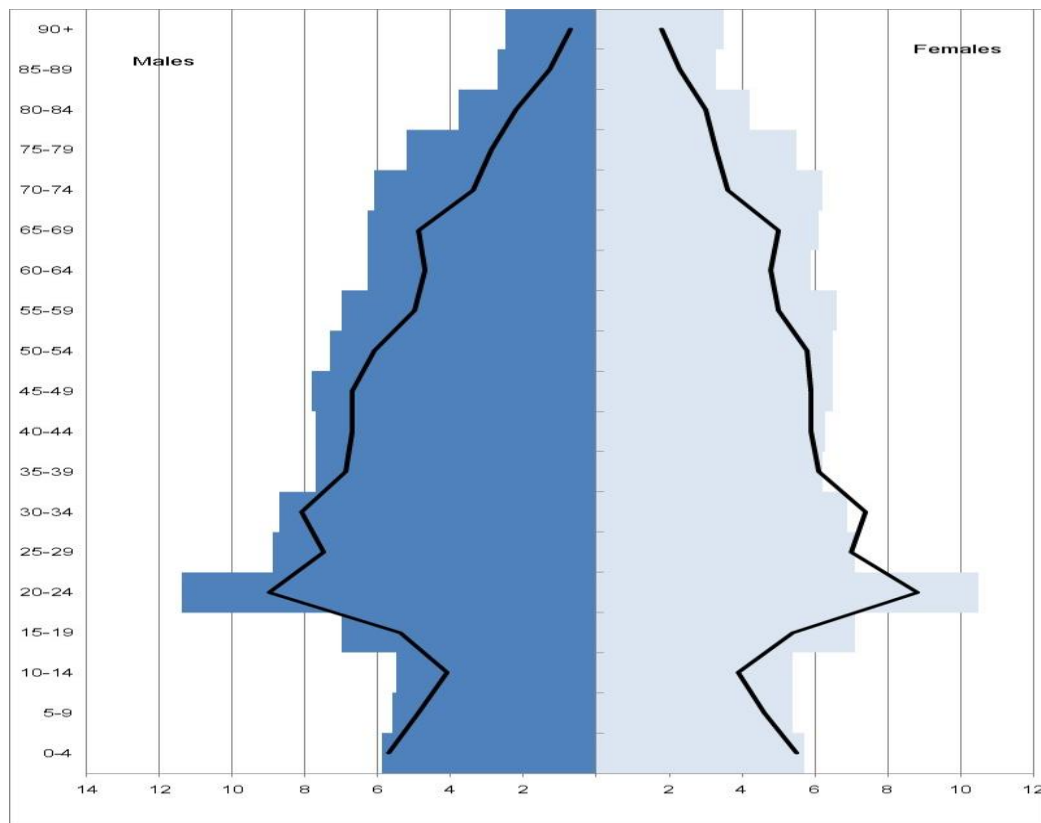
2.3 Figure 7 shows the Mid-Year Estimates from 1991 to 2016 and the 2014-based population projections through to 2039. Despite the fluctuations in the mid-year estimates the general pattern shows that the past rate of population growth is expected in the future. This set of population projections suggests a higher level of growth than previous sets of projections. This reflects the population increase in the 2011 Census. The line illustrating the mid-year estimates reveals that the latest estimate for mid-2016 is higher than the projected figure for 2016 suggesting the projections could be underestimating further population growth if past trends continue. The ONS 2016-based subnational population projections are scheduled for release in May-June 2018.

Figure 7: Population 1991 to 2039



Source: Mid-Year Estimate (1991-2016) and 2014-based sub-national population projections (2011-2039), ONS, Crown Copyright

Figure 8: Bournemouth Population at 2014 and 2039 (in thousands)



█ 2014 Population based on Mid-Year Estimate
█ Population as at 2039

Source: 2014-based sub-national population projections, ONS, Crown Copyright

- 2.4 The above population pyramid in figure 8 helps show the pattern of growth in the population between 2014 and 2039. The chart illustrates that all the age groups experience an increase in population over the 25-year period. The smallest percentage growth is in the 30-34 age group. This reflects in part the smaller population numbers in 2014 in the 5-9 year old cohort. The increase in the number of births particularly shows in the 0-4 population in 2014 and this trend continues through the projections period. The changes in population reflect both historical trends as well as more recent trends relating to mortality, fertility and migration.
- 2.5 The population spike within the 20-24 cohorts is peculiar to Bournemouth and other university towns and reflects the student population. The student population can cause some difficulties when producing population projections, due to the use of migration data. Migration data is based on patient records and movements to and from Bournemouth are recorded based on when patients register or leave a surgery. A potential weakness in this method is that some moves will not be picked up on this system. When people move around the country it may take some time for them to re-register with a doctor in which case they will not be counted as a move. This issue tends to affect young men particularly because some do not re-register. It can be particularly evident in areas that have a high proportion of students. Students leaving their place of study and moving on to different areas are less likely to be recorded as outward internal migrants in the GPs' registers and may therefore be inappropriately contributing to the projected future populations for certain areas. While not a significant impact over the short term this effect may be compounded over the twenty-five year period of the projection. As previously mentioned this has now been addressed with the use of HESA data within the population estimates and projections.

2.6 Within the very elderly population in 2014 the larger female population compared to males is due to longer life expectancy among females and due to the significant number of males who died during World War Two.

Household Projections

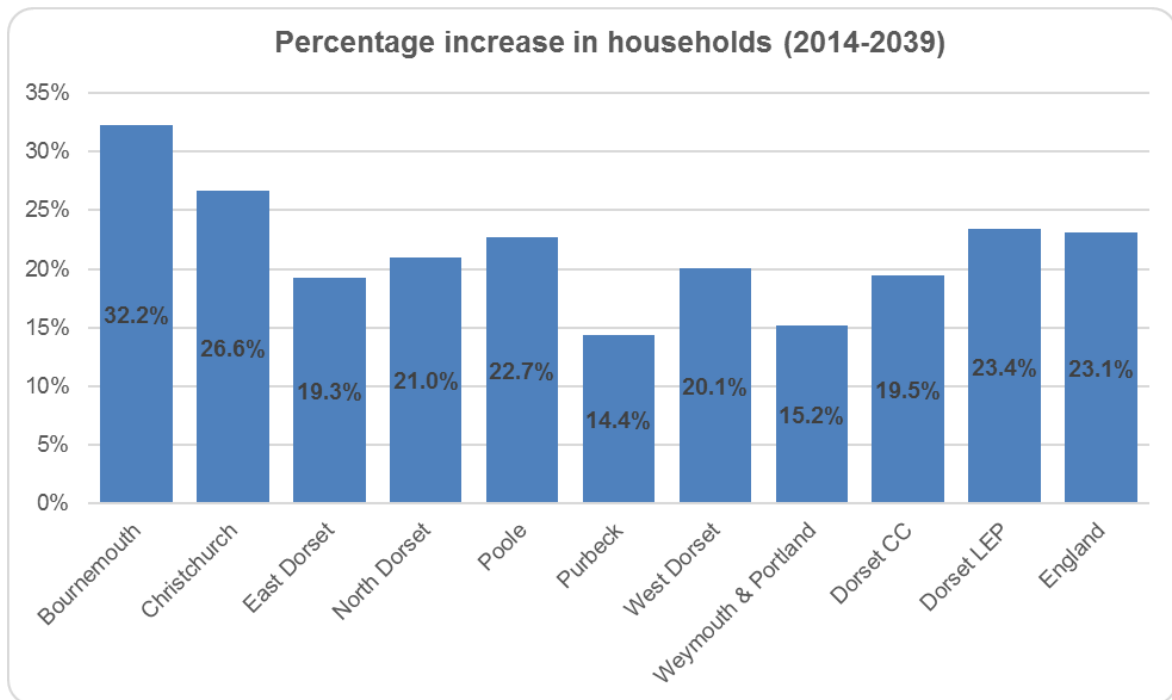
3.0 *Please note like the ONS population projections the 2014-based household projections are based on the superseded population projections. The 2016-based household projections will be released in early Autumn by ONS.* As well as population projections, the government also produces household projections. Like the population projections they are trend-based and indicate what will happen if past demographic trends continue in the future. The projections are linked to the 2014-based Sub-National Population Projections and cover the years 2014 to 2039.

Table 6: 2014-based Sub Regional Household Projections (numbers in thousands)

	2014	2015	2016	2017	2018	2019	2024	2029	2034	2039
Bournemouth	86.1	87.5	88.8	90.1	91.3	92.5	97.9	103.6	109.0	113.9
Christchurch	22.0	22.1	22.3	22.5	22.7	22.9	24.1	25.4	26.7	27.8
East Dorset	38.2	38.4	38.6	38.9	39.1	39.4	40.9	42.6	44.2	45.6
North Dorset	29.8	30.1	30.4	30.6	30.9	31.2	32.5	33.9	35.1	36.0
Poole	65.1	65.6	66.2	66.7	67.3	67.9	70.8	73.9	77.0	79.8
Purbeck	20.0	20.1	20.2	20.2	20.3	20.5	21.1	21.8	22.4	22.9
West Dorset	45.4	45.7	46.0	46.4	46.8	47.2	49.1	51.1	53.0	54.5
Weymouth & Portland	28.7	28.8	29.0	29.2	29.4	29.5	30.4	31.4	32.3	33.0
Dorset CC	184.0	185.2	186.5	187.8	189.2	190.7	198.2	206.1	213.6	219.8
Dorset LEP	335.2	338.2	341.5	344.7	347.8	351.0	366.8	383.6	399.6	413.5
England	22,746	22,984	23,228	23,464	23,696	23,926	25,014	26,083	27,088	28,003

Source: 2014-based sub-regional household projections, CLG

Figure 9 Percentage increase in households (2014-2039)



3.1 Figure 9 illustrates the percentage increase in the number of households between 2014 and 2039. The projections suggest that by 2039 the number of households in Bournemouth will increase by 32.2%. Average household size as at mid-2014 was 2.17 in Bournemouth compared to 2.35 in England this is projected to fall to 2.04 by 2039; across England the figure is predicted to fall to 2.21.

Population Sources including websites

Mid-2016 Population Estimates, ONS. Available on the ONS website at:
<https://www.ons.gov.uk/peoplepopulationandcommunity/populationandmigration/populationestimates/bulletins/annualmidyearpopulationestimates/mid2012tomid2016>

Local figures are also available on the council website at:
<http://www.bournemouth.gov.uk/councildemocratic/Statistics/PopulationMigration/PopulationEstimates.aspx>

2014-based sub-national population projections, ONS. Available on the ONS website at:
<http://www.ons.gov.uk/peoplepopulationandcommunity/populationandmigration/populationprojections/bulletins/subnationalpopulationprojectionsforengland/2014basedprojections>

Vital Statistics on births and deaths, ONS. Available on the ONS website at
<http://www.ons.gov.uk/peoplepopulationandcommunity/birthsdeathsandmarriages/livebirths/bulletins/birthsummarytablesenglandandwales/2016>
<http://www.ons.gov.uk/peoplepopulationandcommunity/birthsdeathsandmarriages/deaths/bulletins/deathsregistrationssummarytables/2016>

Internal Migration statistics are available on the ONS website at:
<http://www.ons.gov.uk/peoplepopulationandcommunity/populationandmigration/populationestimates/bulletins/annualmidyearpopulationestimates/mid2016> (please note it is released with the Mid-Year Estimate data)

International migration is available at:
<https://www.ons.gov.uk/peoplepopulationandcommunity/populationandmigration/migrationwithintheuk/datasets/localareamigrationindicatorsunitedkingdom>

Local information is available at:
<http://www.bournemouth.gov.uk/CouncilDemocratic/Statistics/PopulationMigration/Migration.aspx>

2014-based sub-national household projection statistics are available from the DCLG site at: <https://www.gov.uk/government/statistics/2014-based-household-projections-in-england-2014-to-2039>