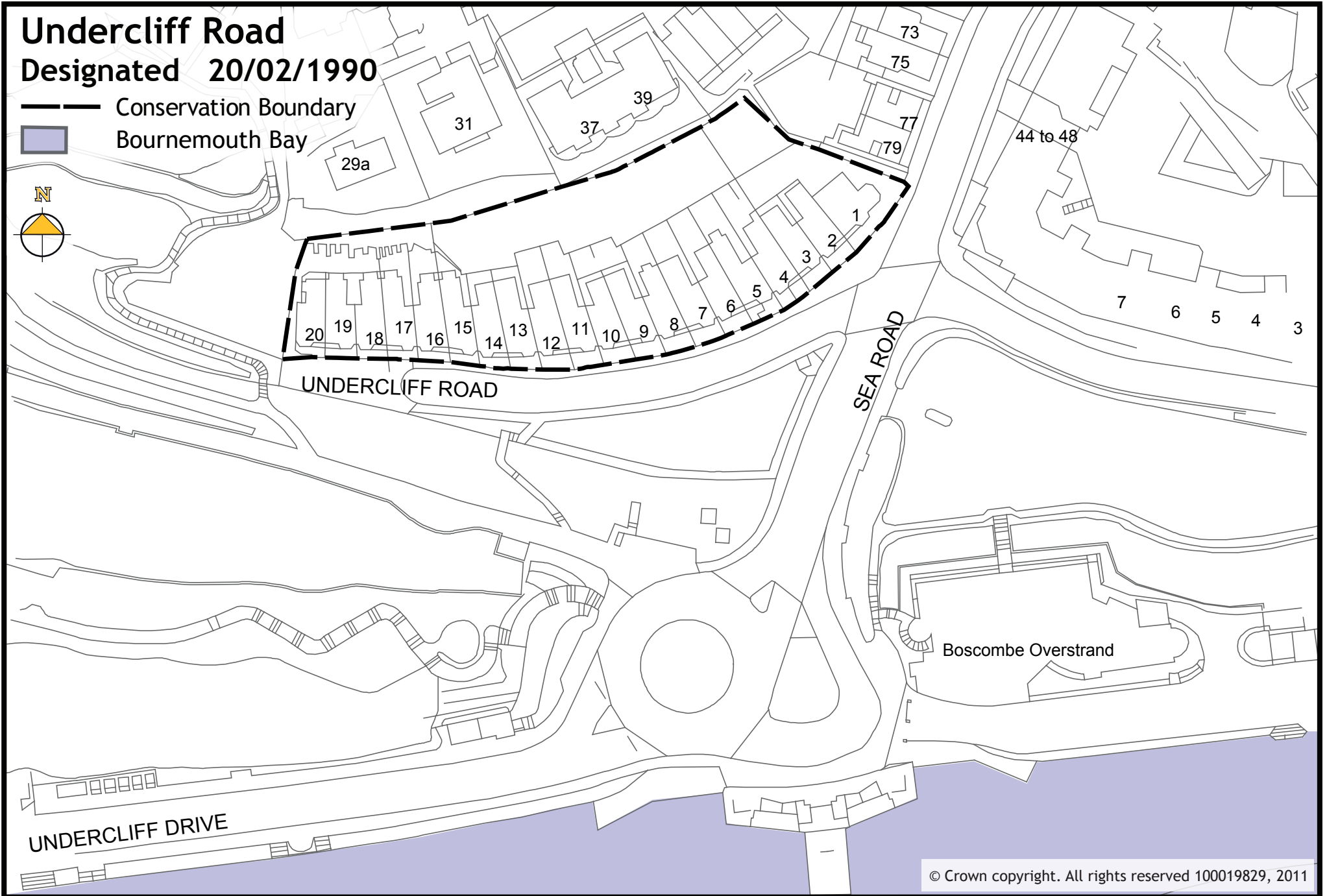


# Undercliff Road

Designated 20/02/1990

— Conservation Boundary  
■ Bournemouth Bay



## **Undercliff Road**

Extract from Appendix 1 of the Bournemouth District Wide Local Plan (2002):

Undercliff Road conservation area includes a terrace of twenty properties built at the turn of the century by McEwan Brown. The properties have a succession of elegant bays and impressive elevated porches, with attractive columns, reached by stone steps. The front elevation features a blending of brickwork, stonework and render. There is full mansard roof which houses the most striking feature: a line of shaped gables, resembling a row of upturned rowing boats and thereby seeming to suit this coastal position.